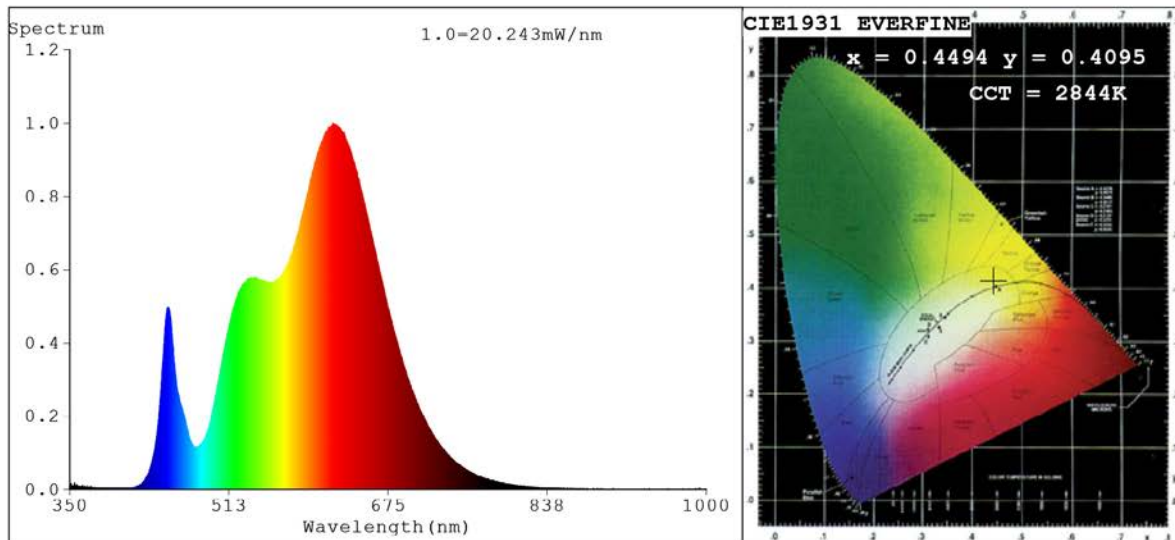


Spectrum Test Report



Color Parameters:

Chromaticity Coordinate: $x=0.4494$ $y=0.4095$ $u'=0.2562$ $v'=0.5254$
 $CCT=2844K$ ($Duv=0.0006$) Dominant WL: $\lambda_d = 583.3nm$ Purity=57.8%
 Ratio: R=26.1% G=71.9% B=2.0%; Peak WL: $\lambda_p = 618.7nm$ FWHM=157.2nm
 Render Index: $R_a=94.4$ CRI=91.0 TM30: $R_f=91$ $R_g=103$
 R1 =97 R2 =96 R3 =93 R4 =96 R5 =96 R6 =96 R7 =94
 R8 =86 R9 =65 R10=89 R11=93 R12=80 R13=98 R14=95 R15=92

Photo Parameters:

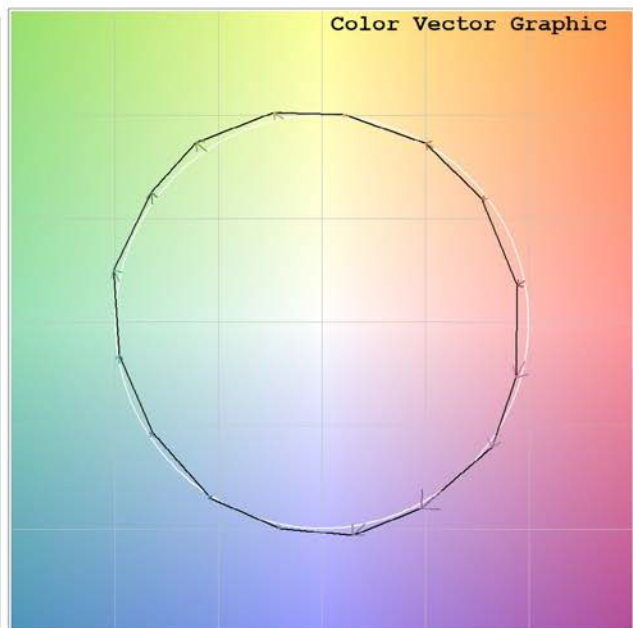
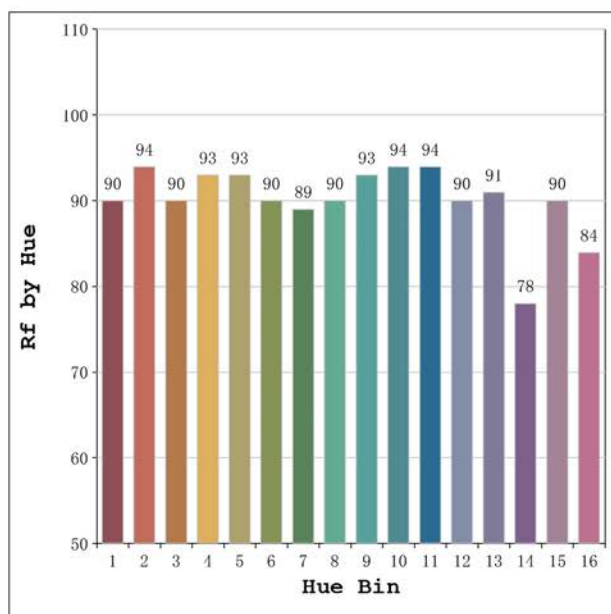
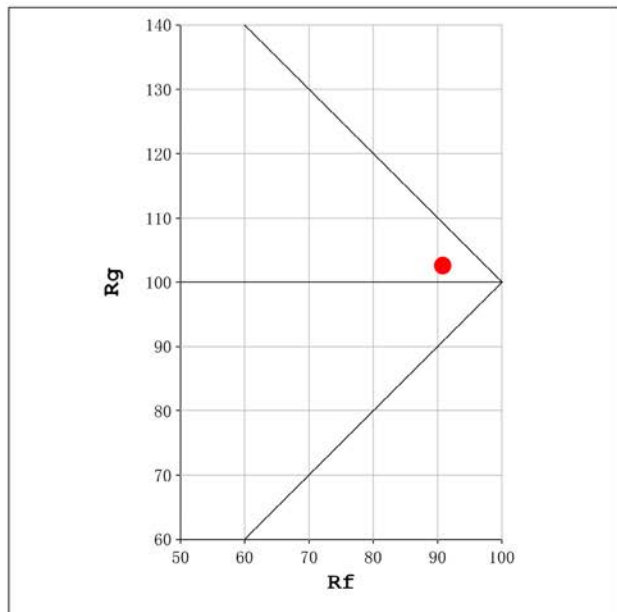
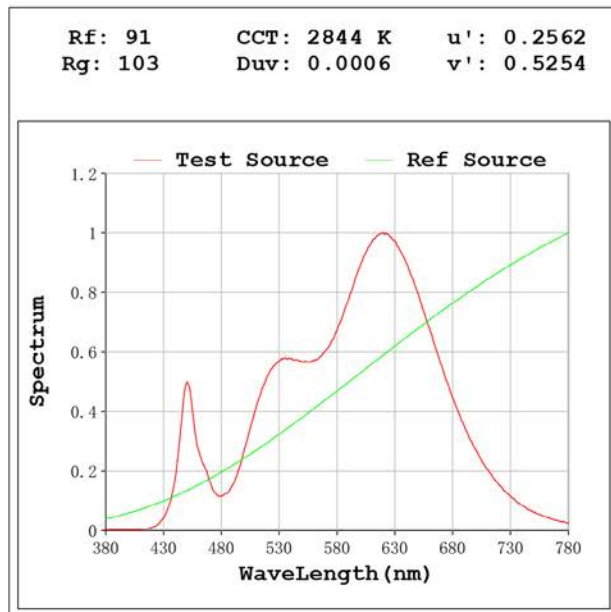
Flux = 921.2 lm Eff. : 92.06 lm/W $\Phi_e = 3.151 W$

Electrical parameters:

$V = 23.998 V$ $I = 0.4170 A$ $P = 10.01 W$ PF = 1.000

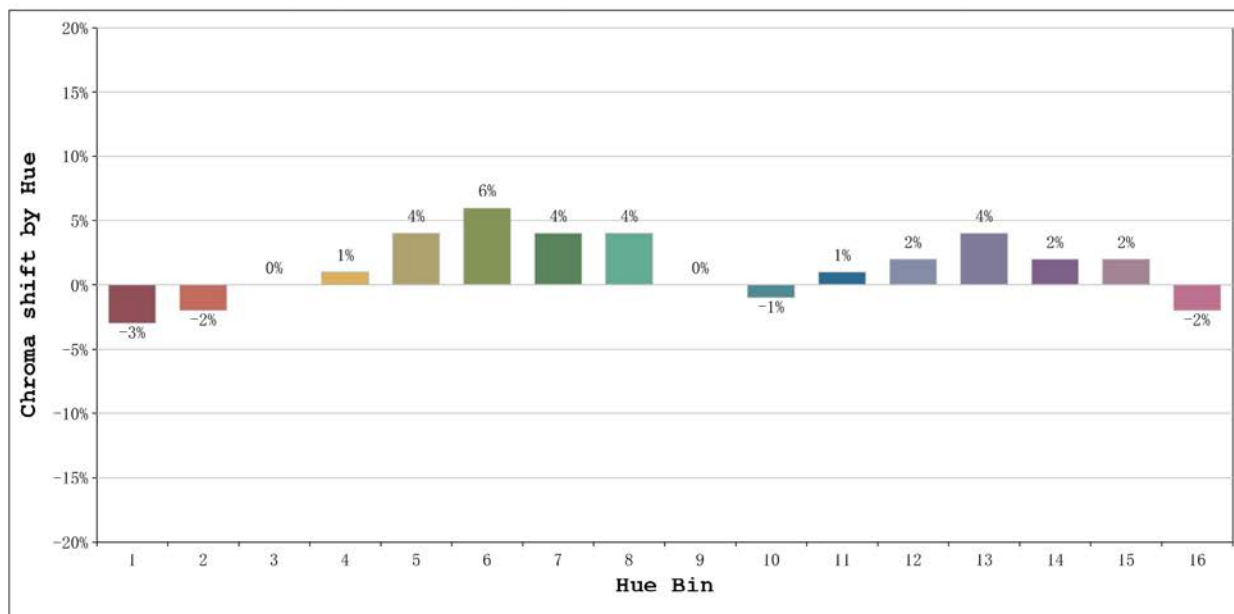
Status: Integral T = 1000 ms $I_p = 37646$ (57%)

Model: Ecoled Élite 10 Gold 2800	Number: 31.164
Tester: Sergio Carneros	Date: 2025-02-12 13:14:14
Temperature: 20Deg	Humidity: 50%
Manufacturer: Luz Negra	Remarks: 100cm de tira flexible



Model:Ecoled Élite 10 Gold 2800
 Tester:Sergio Carneros
 Temperature:20Deg
 Manufacturer:Luz Negra

Number: 31.164
 Date:2025-02-12 13:14:14
 Humidity:50%
 Remarks:100cm de tira flexible



			Graphic shift(%)	
Hue Bin	Hue Angle	Rf	Chroma	Hue
1	0.0° - 22.5°	90	-3	0
2	22.5° - 45.0°	94	-2	2
3	45.0° - 67.5°	90	0	4
4	67.5° - 90.0°	93	1	2
5	90.0° - 112.5°	93	4	4
6	112.5° - 135.0°	90	6	2
7	135.0° - 157.5°	89	4	-3
8	157.5° - 180.0°	90	4	-4
9	180.0° - 202.5°	93	0	-3
10	202.5° - 225.0°	94	-1	0
11	225.0° - 247.5°	94	1	3
12	247.5° - 270.0°	90	2	2
13	270.0° - 292.5°	91	4	-6
14	292.5° - 315.0°	78	2	-12
15	315.0° - 337.5°	90	2	-5
16	337.5° - 360.0°	84	-2	-7

Model:Ecoled Élite 10 Gold 2800 Number: 31.164
 Tester:Sergio Carneros Date:2025-02-12 13:14:14
 Temperature:20Deg Humidity:50%
 Manufacturer:Luz Negra Remarks:100cm de tira flexible